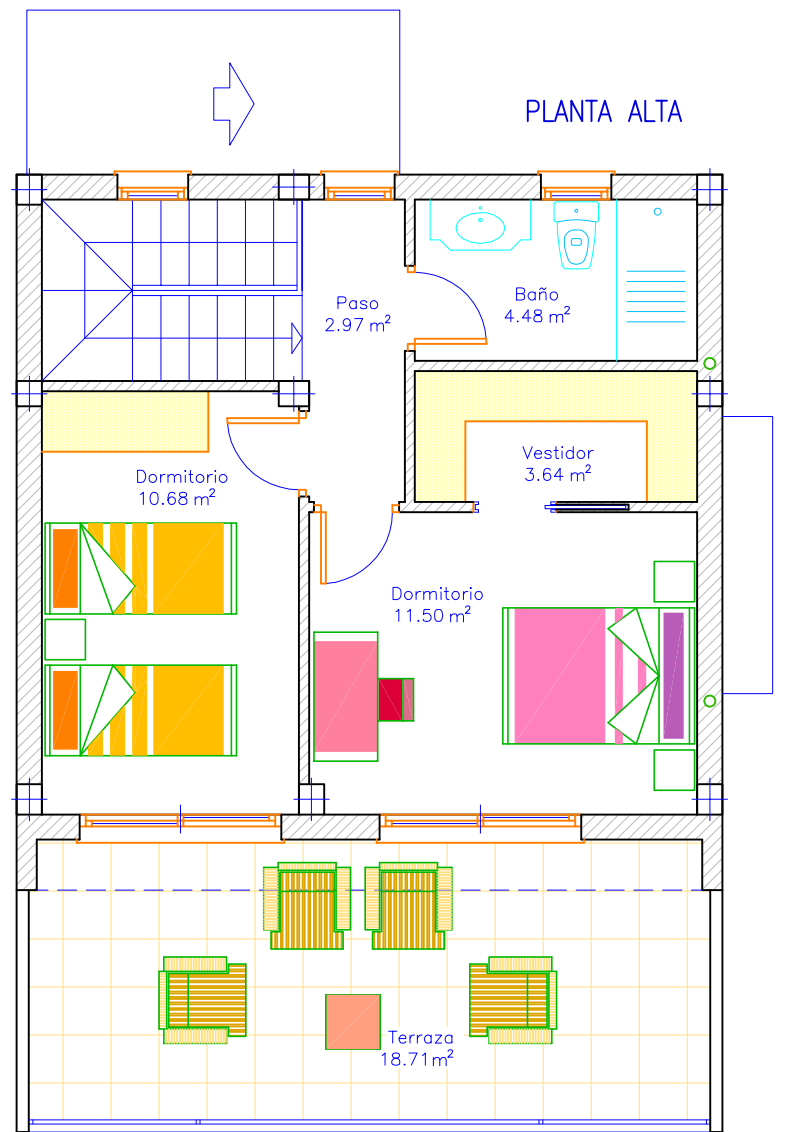
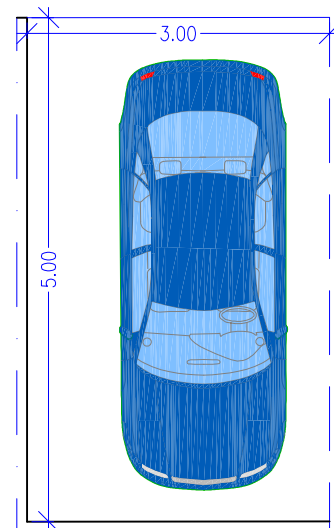


CALLE ALBERTO DURERO (PEATONAL)



CALLE JACOBO TINTORETO  
 APARCAMIENTO EN SUPERFICIE A10  
 SUP. = 15,00M2



VIVIENDA 10

Sup. parcela=181,00m<sup>2</sup>  
 Sup. construida=114,70m<sup>2</sup>  
 Sup. jardin=112,50m<sup>2</sup>  
 Sup. terraza=18,71m<sup>2</sup>  
 Sup. piscina=18,00m<sup>2</sup>  
 Suma sup. disponible=219,96m<sup>2</sup>

